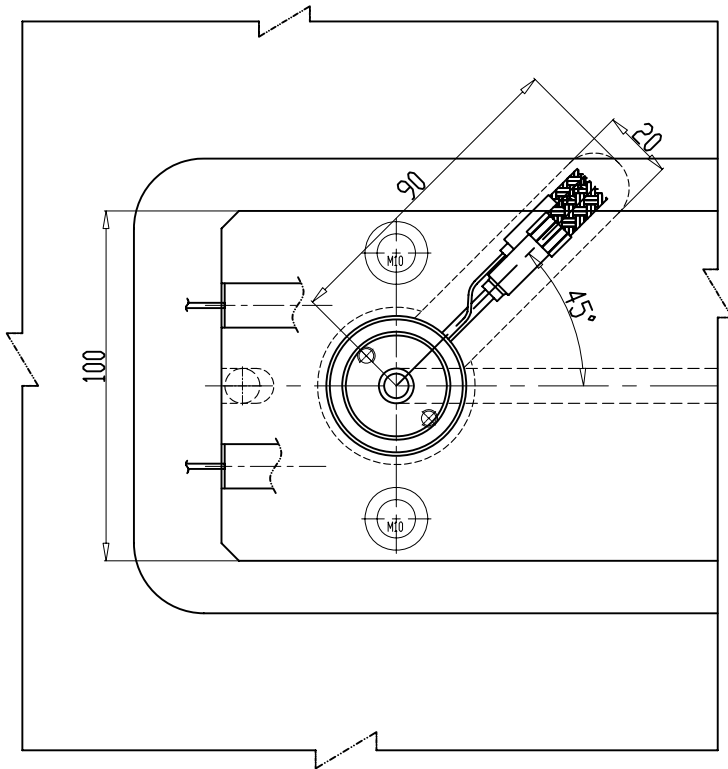


units:mm

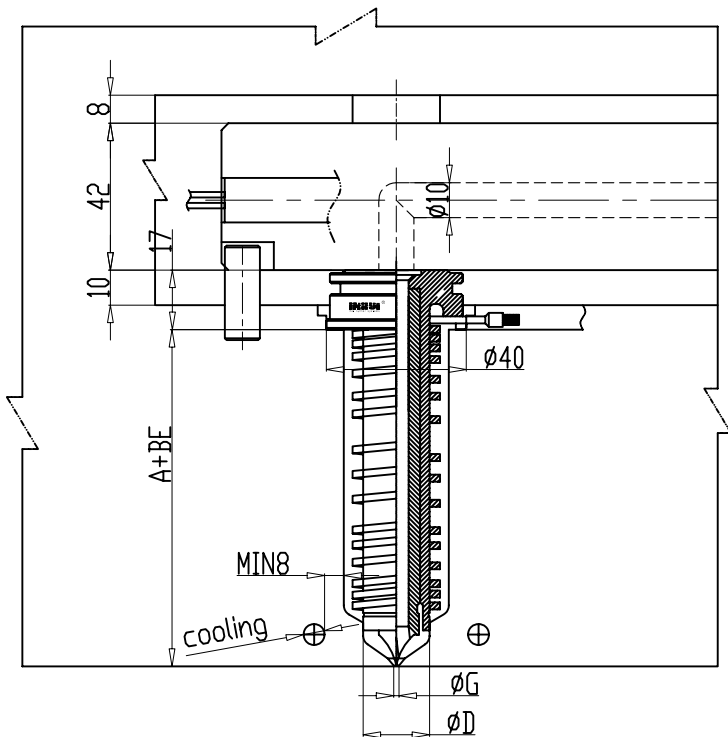
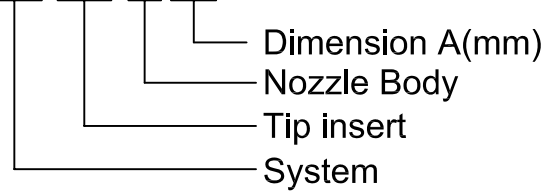


INSTAN-ITT1900	TYPE	DIM.A	DIM.D	DIM.G
	1946	46	18.94	φ1~φ3
	1966	66	18.94	φ1~φ3
	1996	96	18.94	φ1~φ3

Ordering example

INS-ITT-19-A

INS-ITT-19-46



Max shoot weight (gm)

Bush Code	Flow Type Material		
	High	Medium	Low
ITT1900	500	250	150

Note: The heat expand must be considered in manufacture and assembly, generally it is called "BE"

Function BE: $BE = A \times 13.2 \times 10^{-6} \times (T_{nozzle} - T_{room})$ (The temperature of nozzle-room temperature 21°C)